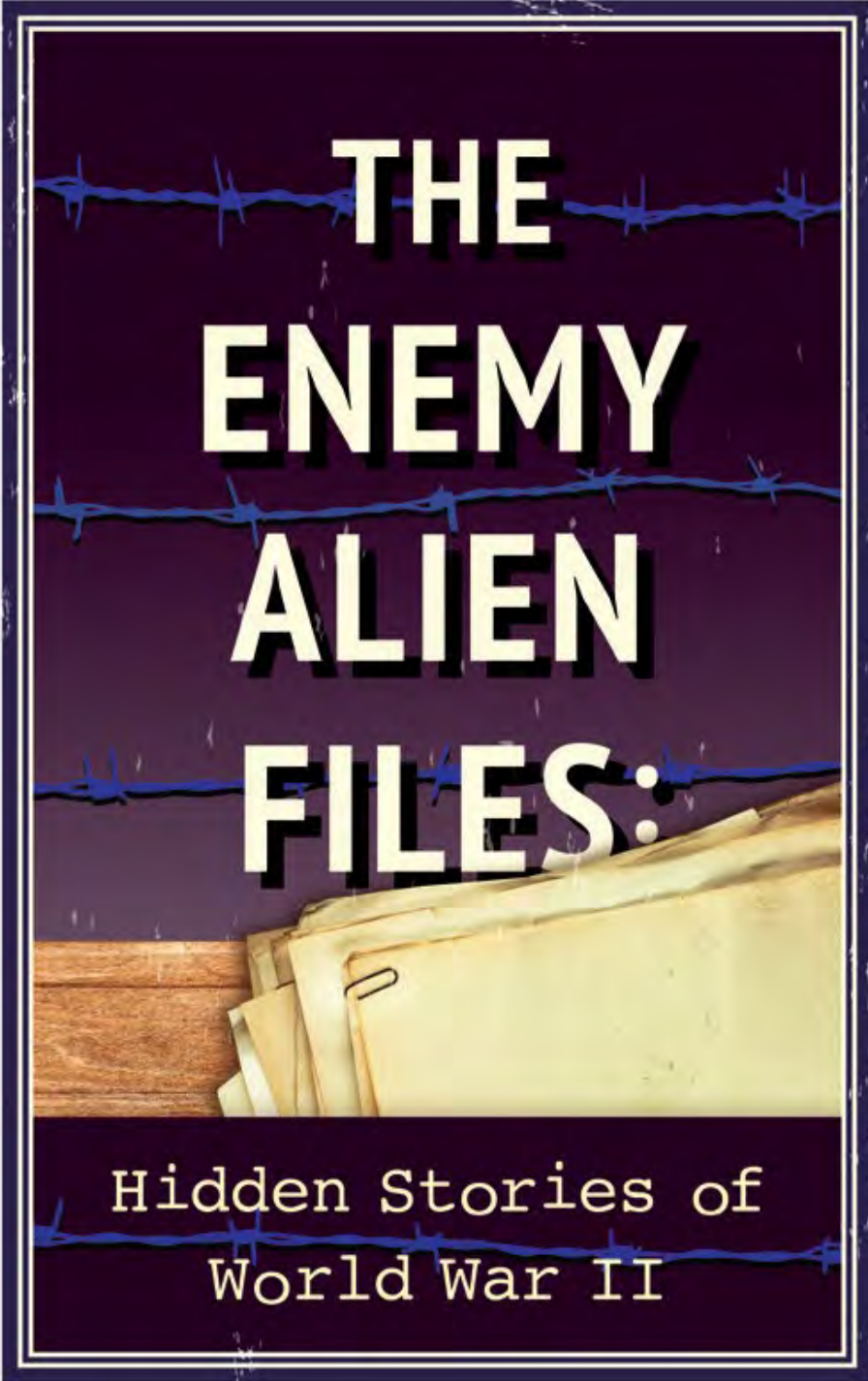


Room 410C



**THE  
ENEMY  
ALIEN  
FILES:**

Hidden Stories of  
World War II

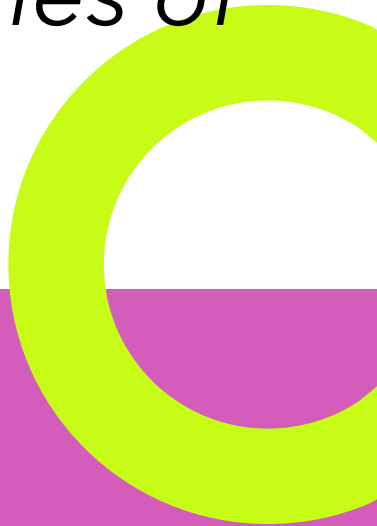
# THE ENEMY ALIEN FILES OF WWII:

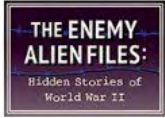
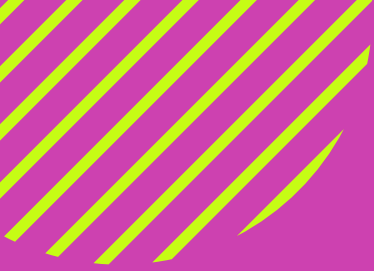
Reckoning and  
Recovering our  
Shared Pasts

Park interpreters and educators representing a cross-section of Japanese, Japanese Latin American, German, and Italian American communities discuss their shared histories in a traveling interactive exhibition *The Enemy Alien Files: Hidden Histories of World War II*.

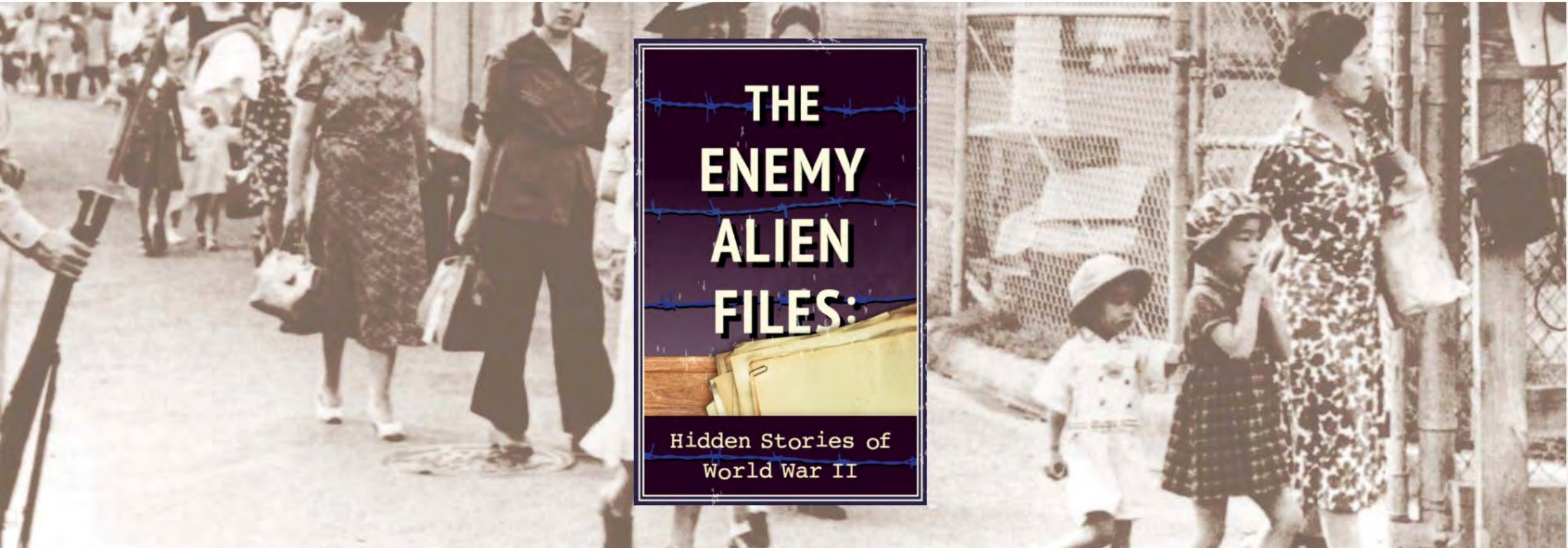
# ENEMY ALIEN FILES OF WWII

RECKONING AND RECOVERING OUR SHARED PASTS





[Home](#)   [Touring Exhibit](#)   [Online Exhibit](#)   [About](#)   [Resources](#)   [Support](#)   [Contact](#)   [NJAHS](#)



**THE  
ENEMY  
ALIEN  
FILES:**  
Hidden Stories of  
World War II

National  
Japanese  
American  
Historical  
Society

NJAHS



**Rosalyn Tonai**

EXECUTIVE DIRECTOR

National Japanese American Historical Society



National  
Japanese  
American  
Historical  
Society

NJAHS



- BA, Social Welfare, University of California, Berkeley
- MA, Public Administration, Nonprofit Management, University of San Francisco
- Coro Foundation, Asian Pacific Islander Community Fellow
- Getty Institute of Museum Management
- Executive Director, 33 years, NJAHS
- Co-Curator, Strength & Diversity: Japanese American Women, 1885 to 1990
- Project Director, Blg640 Development - MIS Historic Learning Center.

# Rosalyn Tonai

EXECUTIVE DIRECTOR

National Japanese American Historical Society

Exhibitions ▸

On View

Upcoming

Past

Online

Traveling

## A More Perfect Union: Japanese Americans and the U.S. Constitution



# National Japanese American Historical Society

PRINCIPAL CONSULTANT & COMMUNITY COLLECTIONS LIAISON, 1987 TO 2004



## ***Strength & Diversity: Japanese American Women, 1885 to***

1991 Award of Merit: American Association for State and Local History

1992 Award of Excellence: Smithsonian Institution

for scholarship, discovery of original objects, and a model for museum-community collaboration.

On Tour through SITES 1992 to 1997 with special emphasis on museum-community collaboration.

.

# National Japanese American Historical Society

MUSEUM-COMMUNITY COLLABORATION 1990 TO 1997

A \$5mil. adaptive reuse project operated by NJAHS in the Presidio of San Francisco and developed by The NJAHS, Presidio Trust, and the National Park Service -illuminates the untold story of the first secret US Army language school that trained Japanese American enlisted soldiers for the war against Japan, prior to the start of World War II . Ironically, while they served the US, their families were among the 120,000 Japanese Americans , two-thirds of them American citizens, who were excluded from the West Coast and incarcerated behind barbe wire in inland confinements camps.



# National Japanese American Historical Society

MILITARY INTELLIGENCE SERVICE HISTORIC LEARNING CENTER, 2013 TO PRESENT





# ROUNDTABLE

- Ground Rules
- Background/Context
- Introduction-Speakers
- Key Questions
- Roundtable
- Closing





# GROUND RULES

- Sacred Space
- Respect & Share
- One at a time
- Acknowledge
- Agree to disagree
- Solution-driven





# TERMINOLOGY

- **INTERNMENT** - Detention of ENEMY ALIENS, subject to the Geneva Convention protocols (DOJ, INS, USArmy)
- Japanese American **INCARCERATION** , **Concentration** Camps (War Relocation Authority)
- “Assembly Centers” (Wartime Civilian Control Administration, WCCA)  
**NOT Relocation**
- Forced Removal, Exclusion, **NOT Evacuation**

# JAPANESE INCARCE

WAR RELOCATION  
AUTHORITY

WCCA\* "ASSEMBLY  
CENTERS"

\*Wartime Civilian  
Control Station

## JAPANESE AMERICAN INCARCERATION SITES



# WWII INTERNMENT SITES

Internment Camp - Department of Justice
  US Army or Other Facility
  Military Area 1 - February 19, 1942
  Military Area 2 - "Free Zone" Until March 29, 1942



## OTHER HAWAII INTERNMENT CAMPS

- |  |                                     |                            |
|--|-------------------------------------|----------------------------|
| Haiku Military Camp, Hawai'i                       | Kalaheo Stockade, Hawai'i           | Maui County Jail, Hawai'i  |
| Hilo Independent Japanese Language School, Hawai'i | Keunakakai County Jail, Hawai'i     | Waiau County Jail, Hawai'i |
| Honolulu Police Department, Hawai'i                | Lana'i City Jail, Hawai'i           | Waimea Jail, Hawai'i       |
|  | Lihue Plantation Gymnasium, Hawai'i |                            |

Sources: Enery Allen Film Consortium, *Hiro, In America? Internments in 'The Enemy' During WWII and Today*, 2005; Lawrence O'Brien, *Una Storia Segreta*, 2001; German American Intermee Coalition, *Tetouder Kashima: Judgement Without Trial*, 2002; Michi Weglyn, *Years of Infamy*, 1979; Dennis, Inc.; Russell Ender, National Park Service (NPS).

# MENT

Justice (DOJ)

Naturalization

on Facilities



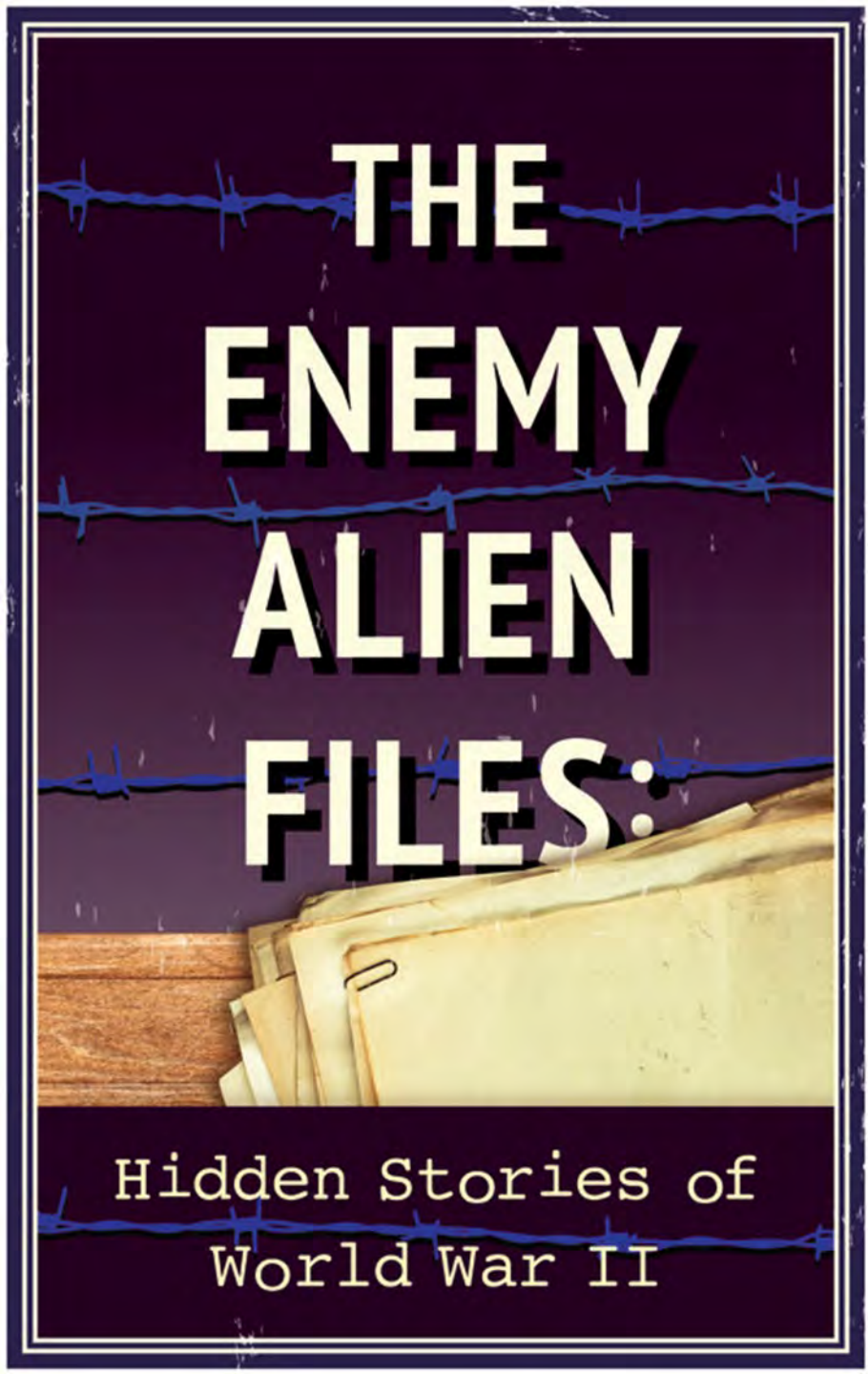
# BACKGROUND

2001

22 YEARS

2022

UPDATED



# THE ENEMY ALIEN FILES:

Hidden Stories of  
World War II



**ON DISPLAY  
SEPT - OCT 2023**

**BOISE STATE  
UNIVERSITY**

**ALBERTSON LIBRARY**

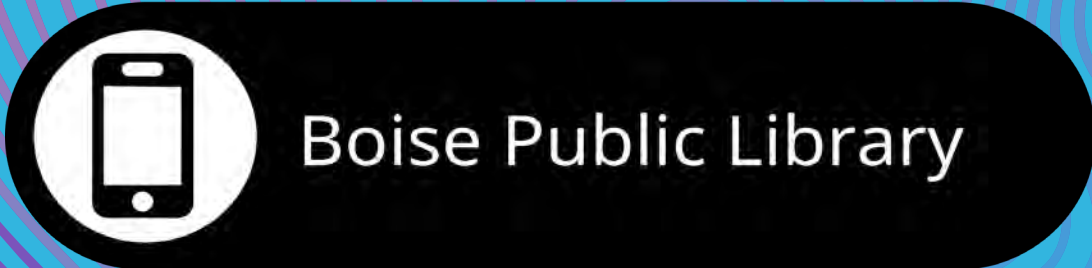


Boise State University



**ON DISPLAY  
SEPT – OCT 2023**

**BOISE PUBLIC  
LIBRARY**





# THE ENEMY ALIEN FILES:

Hidden Stories of  
World War II

<https://njahs.org/enemy-alien-files/>



# Establishing Common Ground **PARTNERS**



**JOHN CHRISTGAU**  
Author, poet, playwright



**LAWRENCE DISTASI**  
Author



**GRACE SHIMIZU**  
Project Director,  
Japanese Peruvian Oral  
History Project



**NATSU SAITO**  
Professor of Law,  
emeritus  
Georgia State University



# INSTITUTIONAL PARTNERS



**DR. GRACE MORIZAWA**  
EDUCATION  
COORDINATOR



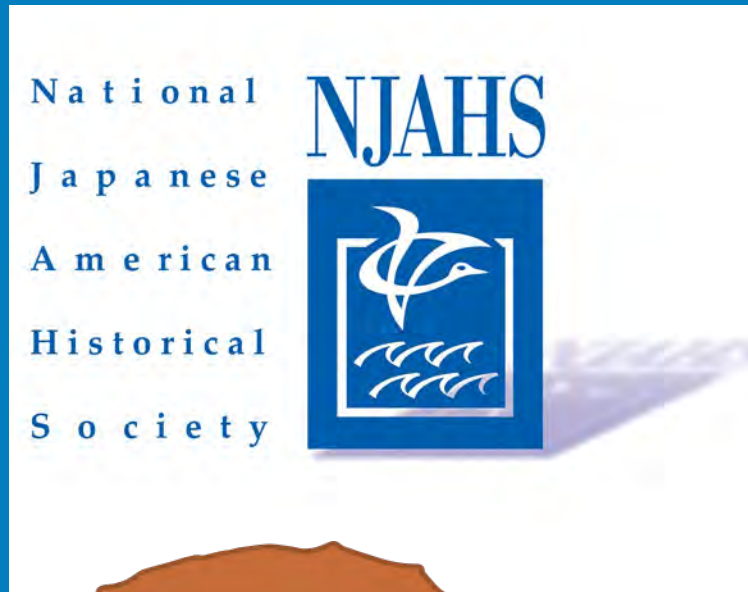
**ROSALYN TONAI**  
PROJECT DIRECTOR



**LYNN FONFA**  
NPS EDUCATION  
SPECIALIST  
GOLDEN GATE NAT'L  
RECREATION AREA/NATIONAL  
PARK SERVICE



**DR. STAN PESICK**  
CURRICULUM  
DEVELOPER  
BAY AREA WRITING  
PROJECT





[APPLY](#)

## THROUGH OUR EYES

People of Japanese Ancestry from Mass Incarceration to Segregation in  
1940s America



# RECKONING

LISTEN TO ALL POINTS OF VIEW

VALIDATE WITH RESEARCH

AGREE THAT THERE WILL BE DIFFERENCES IN  
INTERPRETATION AND THEORIES

RECOGNIZE THE TRAUMA AFFECTS PEOPLE DIFFERENTLY

SPEAK YOUR TRUTH, BE AT PEACE

PERMISSIONS & APOLOGIES & EMPATHY

# HEALING

# SHARED HISTORIES

Intergenerational  
Trauma

Denial

Shame

Breaking the Silence

# RECOVERING OUR SHARED PAST







# ENEMY ALIEN FILES CONTINUES

## CURRENT PROJECTS

**INTRODUCTION**

**PROJECT BACKGROUND**



**STACEY CAMP** Michigan State University  
The Kooskia Internment Camp Archaeological Project



**Sharp Park Memorial**, Pacifica, CA  
Pacifica Historical Society

**CHRISTINA OLIVOLO**

Author, President  
Le Donne d'Italia

# RECKONING

CONFESSION ?

WHAT SURPRISED YOU ?

WHAT DID YOU LEARN IN THE  
PROCESS?

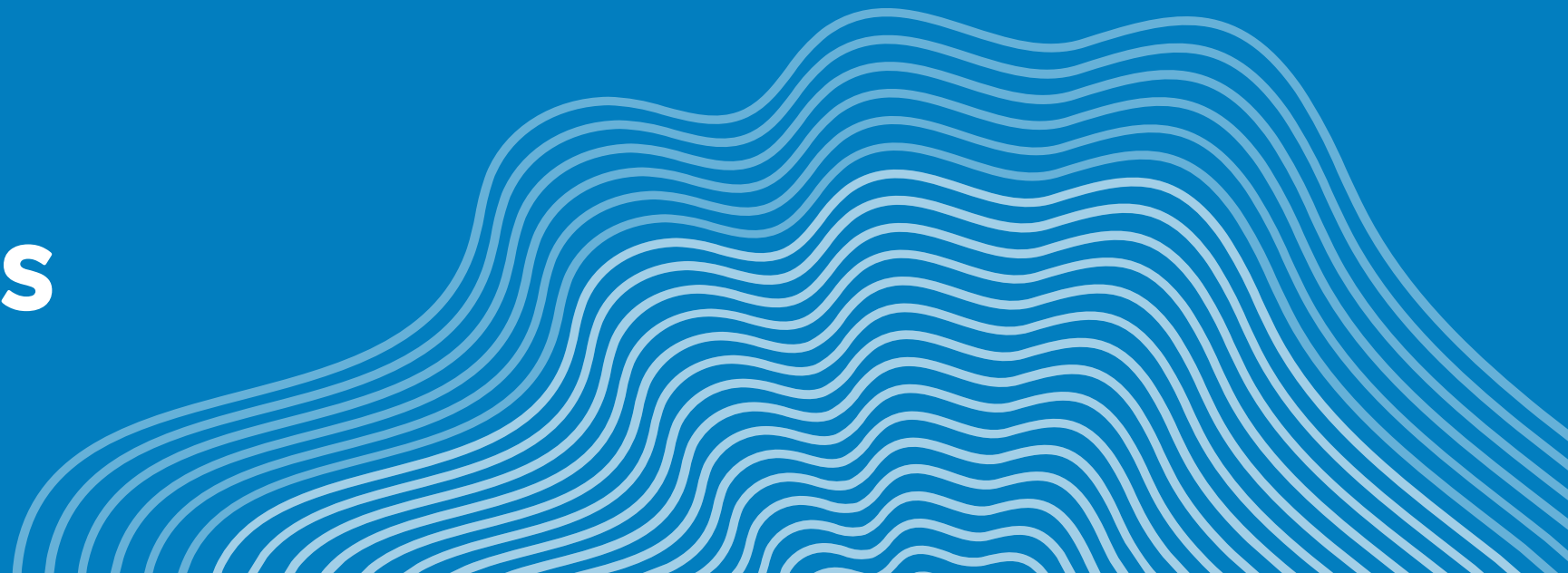
**HOW DID YOU  
RECOVER  
YOUR SHARED  
PAST?**

**WAS THE  
RECOVERY  
WITHIN OR  
WITHOUT?**

# HIGHLIGHTS OF YOUR SHARED PAST

WHAT WAS  
RECOVERED?

WHAT ARE  
SOME  
TAKEAWAYS





# LOOKING AHEAD TO 2024





**BUILDING A  
BETTER  
FUTURE,  
TOGETHER**